



Victim Assistance AP Mine Ban Convention

Anti-Personnel Mine Ban Convention
Convention on the prohibition of the use, stockpiling, production
and transfer of anti-personnel mines and on their destruction
www.apminebanconvention.org

Victim Assistance Obligation

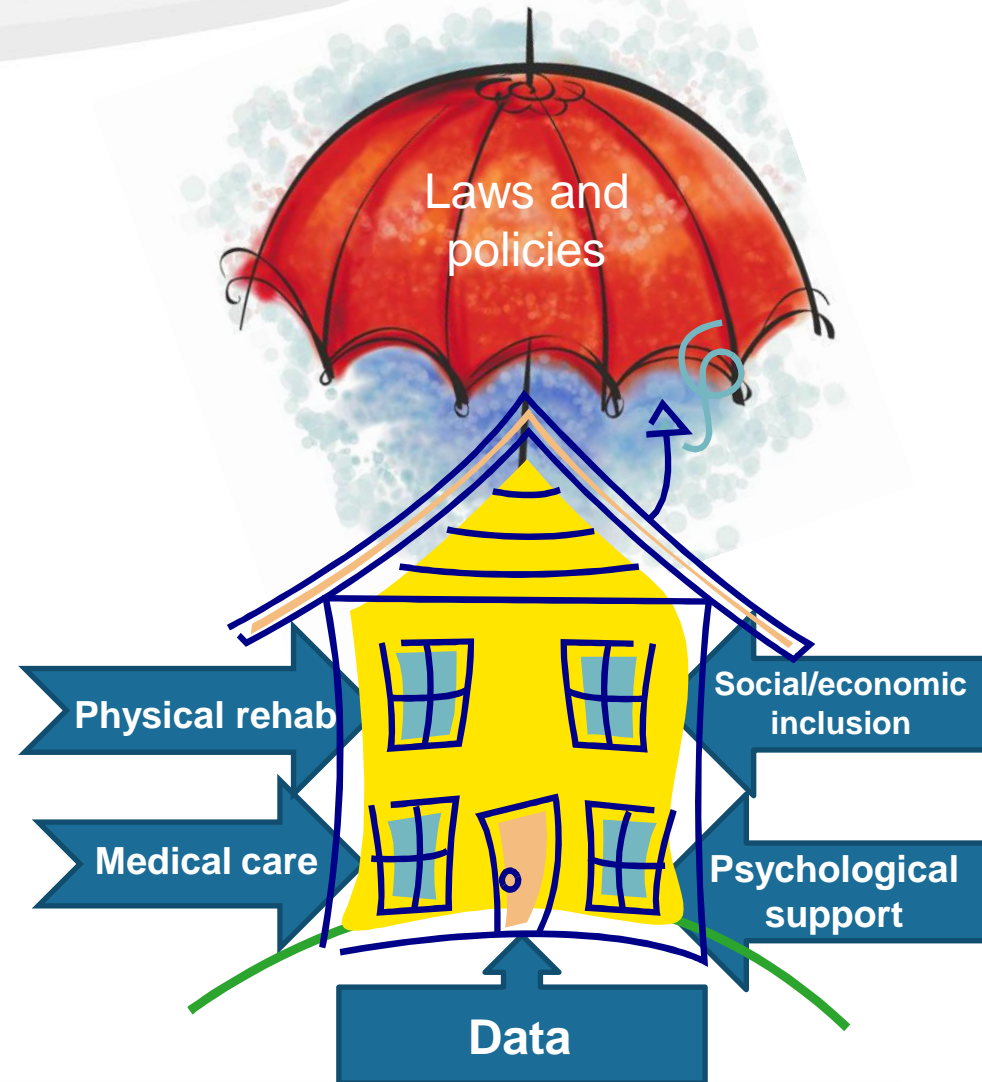
The Convention's preamble records the wish of the States Parties "to do their utmost in providing assistance for the care and rehabilitation, including the social and economic reintegration of mine victims."

This wish is translated into the obligation of "each State Party in a position to do so" to "provide assistance for the care and rehabilitation, and social and economic reintegration, of mine victims."



Victim Assistance

- Data collection and information management
- Emergency and continuing medical care
- Physical rehabilitation, including physiotherapy, prosthetics and assistive devices
- Social and Economic inclusion
- Psychological support
- Laws and public policies



Victim Assistance Commitments

Maputo Action Plan

Preamble	Participation in societies on an equal basis to others
Action #12	Data collection, assessment of needs, availability and gaps in services
Action #13	Time-bound and measurable plan of action
Action #13	Report on the implementation of action plan to States Parties
Action #14	Integration of victim assistance into broader policies and programmes
Action #14	Allocating of budget for the implementation of plan incl. integration



Victim Assistance Commitments Maputo Action Plan

- Action #15 Building local capacity
- Action #15 Enhancing coordination among national stakeholder
- Action #15 Increasing availability and accessibility to services
- Action #16 Inclusion and participation
- Action #17 Awareness raising
- Action #18 Reporting on achievements and challenges prior to 2019 Review Conference
- Action #20 Cooperation and assistance
- Action #23 South-south cooperation and exchange of national experiences



Key guiding principles

- Human rights
- Non-discrimination
- Inclusion and participation
- Gender and age equality
- Holistic and integrated approach
- National ownership
- Transparency



Victim Assistance and the CRPD

The CRPD provides a global standard and an overarching mechanism for all States in meeting their responsibilities to mine victims and persons with disabilities.

Linking victim assistance efforts into CRPD frameworks help to sustain the support to victims and to improve human rights-based approach.



Victim assistance, disability and development

a twin-track approach

Supporting specific policies and programmes to enhance the empowerment of people with disabilities, including survivors

Developing inclusive policies and programmes to address inequalities between disabled/survivors and non-disabled in all socio-economic domains

equality of opportunities



Implementation support vs. service delivery

Implementation support mechanism

Advocacy
Data collection
Coordination
Capacity building
Referrals
Resource-mobilisation
Laws, policies and plans
Reporting

Direct service delivery

First aid
Health care
Rehabilitation
Social & economic inclusion
Education
Psychosocial support
Accessibility



The role of mine action in victim assistance

Data collection

Coordination

Capacity building

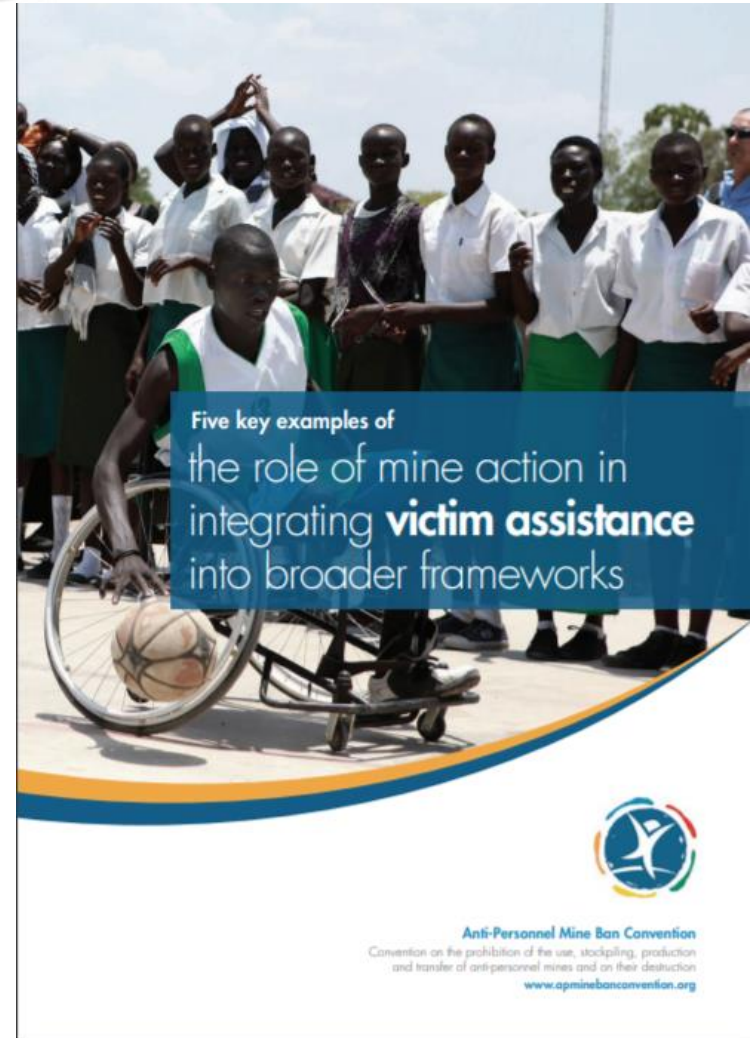
Referrals

Resource mobilisation

Laws, policies and plans

Advocacy

Reporting



You want to know more...



<https://www.apminebanconvention.org/en/publications-about-the-convention/victim-assistance/>



Victim assistance milestones

- Five EU Council Decision sponsored national stakeholder victim assistance dialogues 2018-2020
- National victim assistance gathering during the 17th Meeting of States Parties, 26-30 November 2018, Geneva
- An EU Council Decision sponsored global conference on victim assistance in 2019
- Intersessional Meetings of the Convention, 2019
- Fourth Review Conference of the Convention, 2019



Thank you!

Firoz Alizada

EU Council Decision Implementation Support Officer

Victim Assistance Expert

Anti-Personnel Mine Ban Convention

Implementation Support Unit

isu@apminebanconvention.org

www.apminebanconvention.org

