

ANNEX (C)

الخرائط الجداول التفصيلية

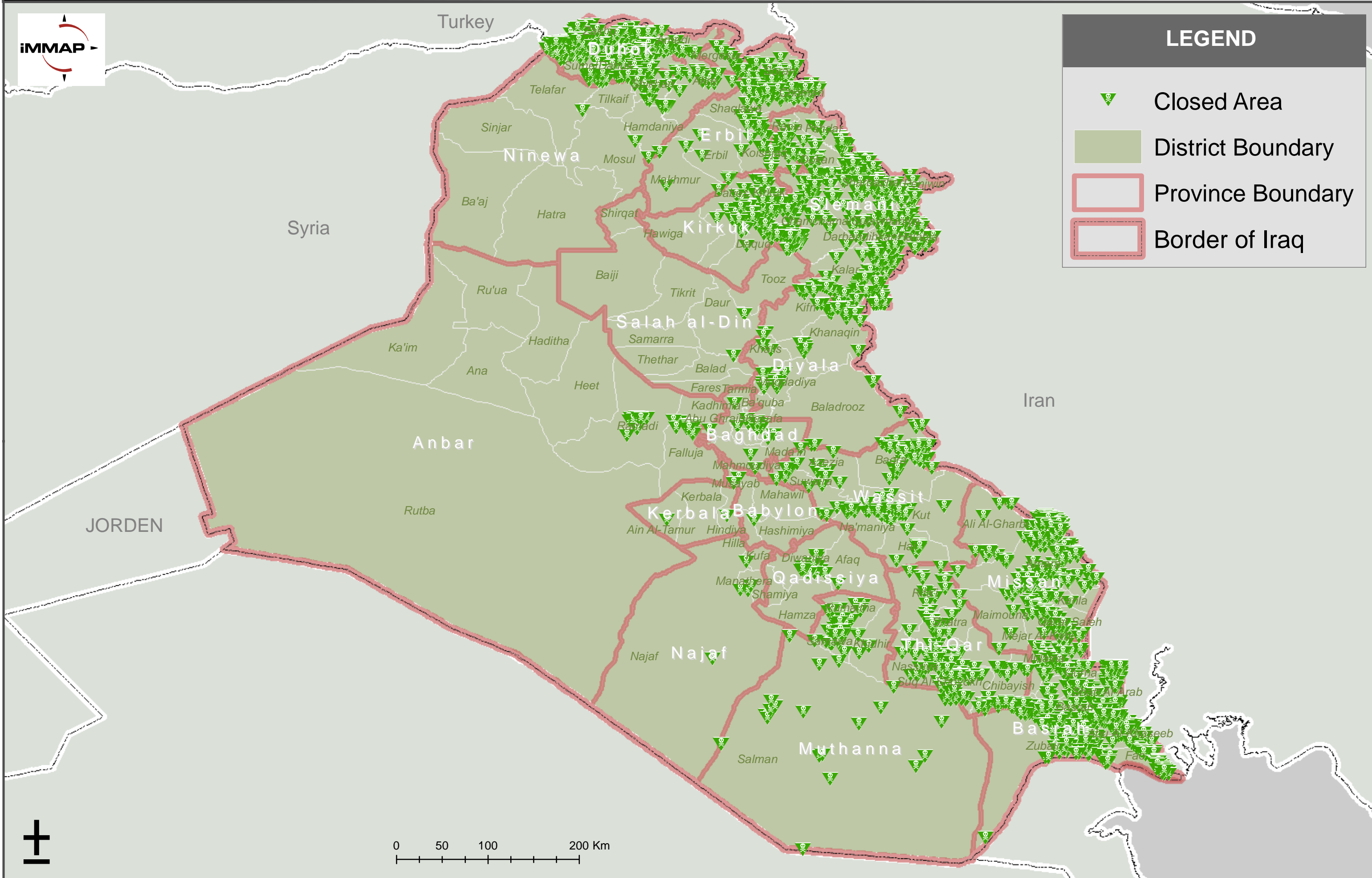
REPUBLIC OF IRAQ

CURRENT SITUATION OF CLEARED AREA



LEGEND

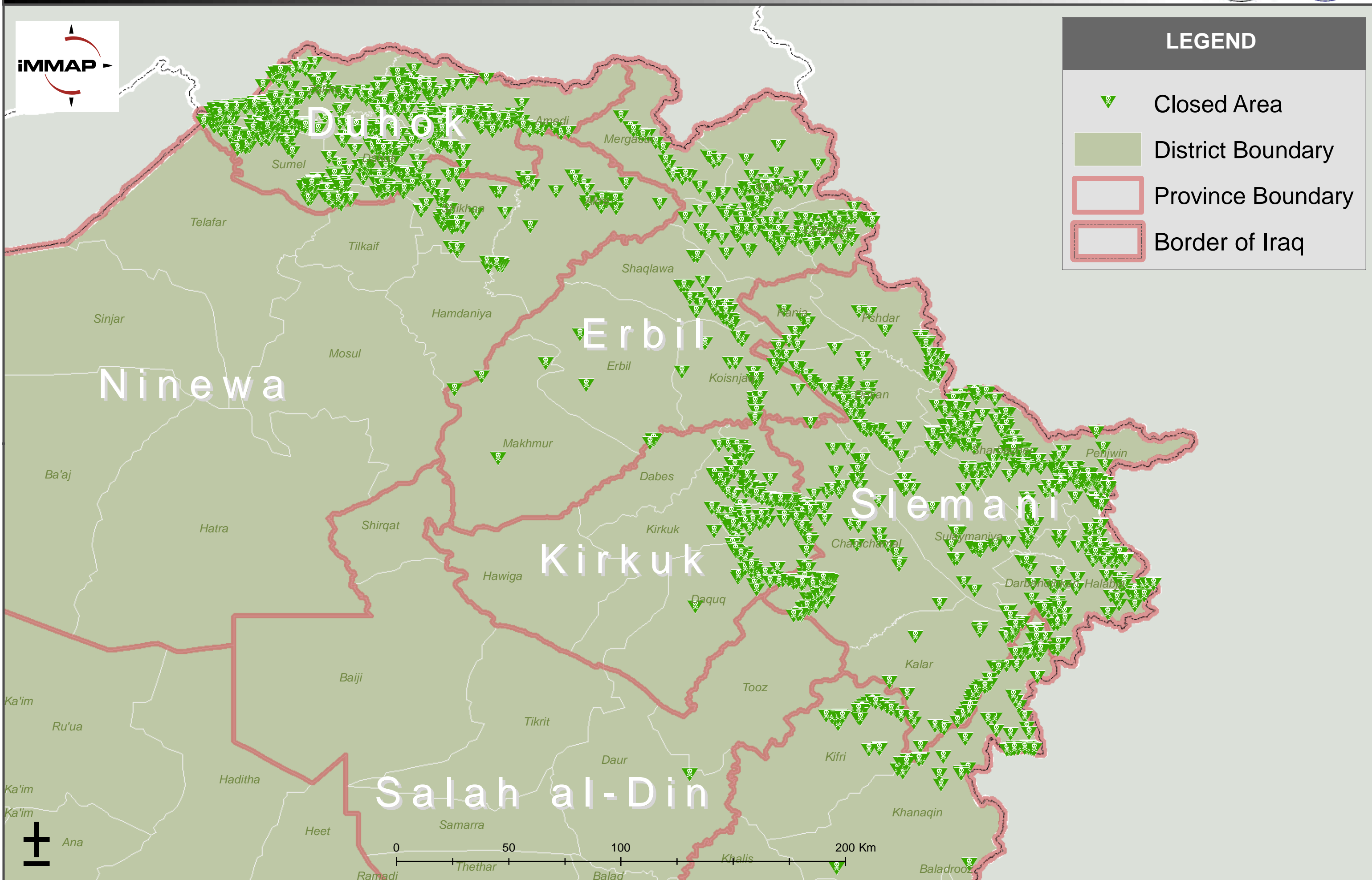
- Closed Area
- District Boundary
- Province Boundary
- Border of Iraq





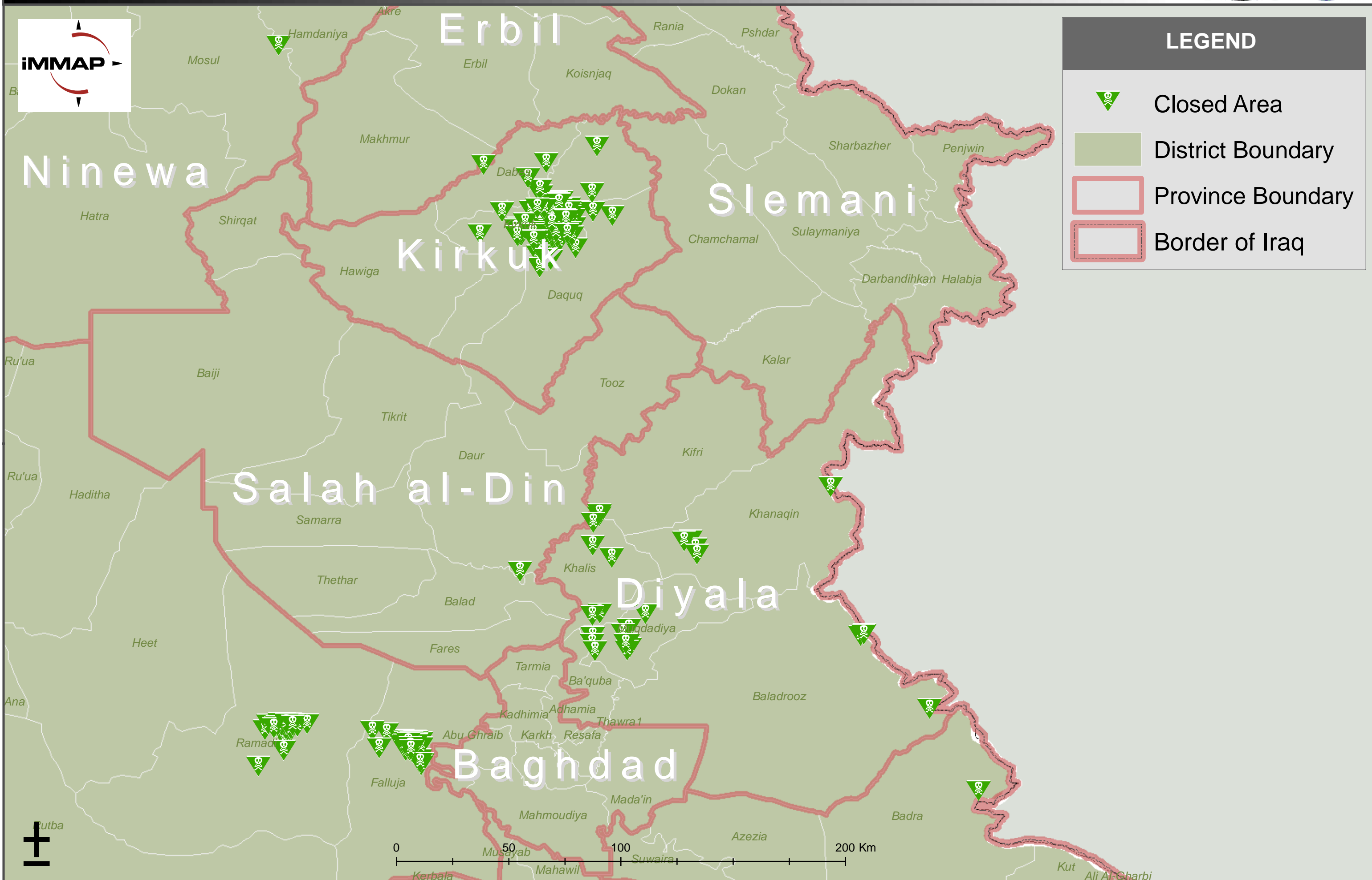
LEGEND

- Closed Area
- District Boundary
- Province Boundary
- Border of Iraq







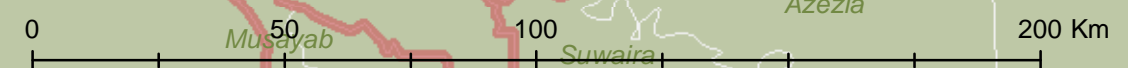
REPUBLIC OF IRAQ

CURRENT SITUATION OF CLEARED AREA FOR RMAC-N



LEGEND

-  Closed Area
-  District Boundary
-  Province Boundary
-  Border of Iraq



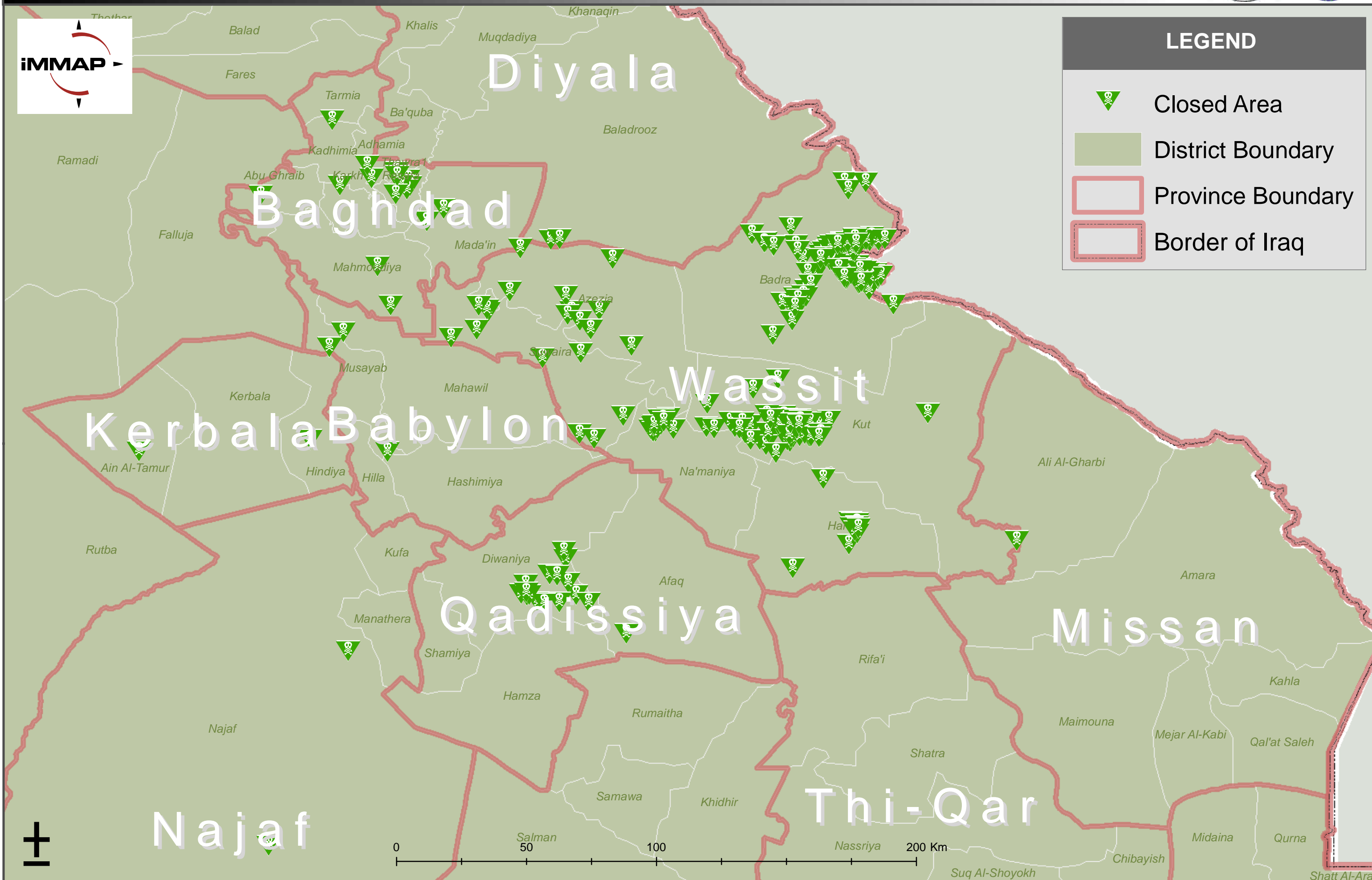
REPUBLIC OF IRAQ

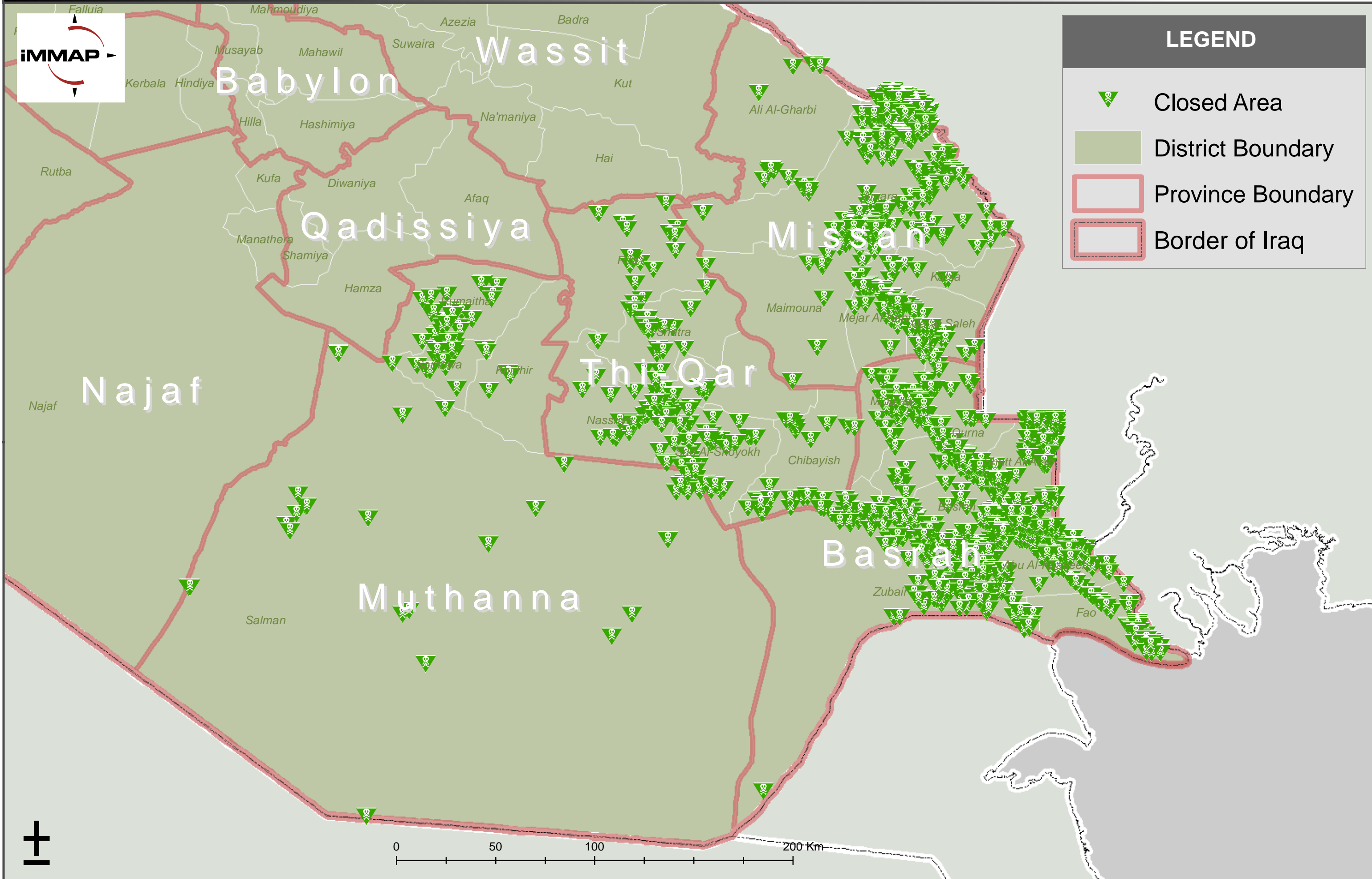
CURRENT SITUATION OF CLEARED AREA FOR RMAC- M EU



LEGEND

- Closed Area
- District Boundary
- Province Boundary
- Border of Iraq





CURRENT SITUATION OF CLEARED AREA

RMAC Name	Province	Total Area Cleared m²	Number of Cleared Hazardous Areas
RMAC-S	Basrah	456,855,297	1,660
	Missan	70,039,498	1,475
	Muthanna	12,782,999	94
	Thi-Qar	20,498,780	392
RMAC-S TOTAL		560,176,574	3,621
IKMAA	Duhok	137,251,649	2713
	Erbil	395,880,414	1610
	Sleman	206,155,175	3,297
IKMAA TOTAL		739,287,237	7,620
RMAC-N	Anbar	1,909,693	178
	Diyala	2,739,226	26
	Karkuk	9,237,809	116
	Ninewa	930,028	2
	Salah al-Din	84,527,387	1
RMAC-N TOTAL		99,344,143	323
RMAC-M EU	Babylon	6,212,064	6
	Baghdad	1,426,089	17
	Najaf	636,151	2
	Qadissiya	21,838,400	17
	Wassit	65,640,645	311
RMAC-M EU TOTAL		97,060,059	357