



REPUBLIC OF MOZAMBIQUE

**12th Meeting of the States Parties to the
Anti-Personnel Mine Ban Convention**
Geneva, 5 December 2012

Mozambique Statement on implementing Article 5

Delivered by

Mr. Alberto Maverengue Augusto
Director, National Demining Institute

Mr. President,

On behalf of the Government of Mozambique, I would like to thank you for allowing me to take the floor to provide an update on demining during Mozambique's Article 5 extension period. I will provide an update on implementation of Mozambique's 2008-2014 National Mine Action Plan and perspectives for completion ahead of the 1 March 2014 deadline. (Next Slide, please)

The 2008 Baseline Survey of Mozambique provided the basis for the 2008-2014 National Mine Action Plan and Mozambique's extension request. The Baseline Survey identified the existence of 541 suspected hazard areas corresponding to 12.2 million m², in the provinces of Tete, Manica, Sofala, Inhambane, Gaza and Maputo. Between 2008 and November 2012, 436 suspected hazard areas totaling 10.5 million m² were demined, meaning that 86% of the tasks identified in the Baseline Survey are now completed. This is in accordance with the National Mine Action Plan and where we should be 15 months before our deadline.

However, as envisioned in the extension request, additional surveys were required to further define the remaining mined area. From 2008 to 2011, a total of 512 new suspected hazard areas corresponding to approximately 22.2 million m² were identified that were not captured

in the Baseline Survey. This includes 146 suspected hazard areas that were identified in the 4 northern provinces of Niassa, Cabo Delgado, Nampula and Zambézia. (Next slide)

Madam Chair,

On the screen is a table representing the total demining results achieved between 2008 and November 2012. As you can see, we have increased the demining capacity in the country resulting in more square meters cleared each year. This was necessary to stay on target to meet our deadline and clear the new areas identified after the 2008 Baseline Survey.

On the next slide, you can see the amount of area planned for each year in our 5 year extension request compared to the total actual area demined per year. This illustrates that we are clearing more new areas than baseline tasks planned for this period which has only been possible by increasing the demining capacity in the country to meet the increased amount of area.

To summarize the progress achieved so far, we have cleared and released a total of 27,763,046 square meters between 2008-2012 resulting in the destruction of more than 20,500 landmines and 6,300 items of unexploded ordnance. This progress is in accordance with the 2008-2014 National Mine Action Plan that still provides the strategic framework for mine action.

To further illustrate the progress achieved so far, the next slide shows the districts affected by mines in 2008, just prior to Mozambique's submission of the extension request. The Districts shown in 'Red' remained mine affected with identified suspected hazard areas remaining to be cleared and released. The Districts shown in 'Yellow' represent districts where demining activities were completed, but final surveys and handover by the government in accordance with Mozambique's Mine Free District Process remained pending.

The next map shows the remaining situation at the start of this year, with the areas marked in diagonal lines representing the districts planned for completion this year.

The next slide shows the situation today. The districts shown in 'Green' are districts classified as 'mine-free'. The districts shown in 'Red' contain suspected hazard areas remaining to be cleared and released. The Districts shown in 'Yellow' represent districts where demining activities are completed, but final surveys and handover by the government in accordance with Mozambique's Mine Free District Process remain pending. (Next Slide)

This table shows the 105 districts where demining operations have already concluded and the Government has declared these districts as 'mine-free'. This includes the Provinces of Gaza, Nampula, Niassa, Zambezia and Cabo Delgado, a total of 5 of the 10 Provinces of Mozambique, where all districts in these provinces are classified as 'mine-free' (Next Slide).

As of November 2012, the remaining situation in Mozambique includes a total of 25 districts with identified mine suspected areas corresponding to a total of approximately 11 million square meters in 248 task sites. Included in this number are 9 confirmed hazard areas equal to 2,222,100 square meters that are located on Mozambique's border with Zimbabwe that present a particular technical challenge. (Next Slide)

With the conclusion reports still coming in from last month and the work still to be concluded in December, we estimate that we will further reduce the remaining area to ca. 9million square meters by the start of the new year. In January, we will have 14 months remaining before our Article 5 deadline to clear and release the remaining area. We believe that we have the necessary demining capacity and sufficient support from our international partners to conclude demining in accordance with the March 2014 deadline. Our greatest remaining challenge to conclude demining by the deadline is the border minefields

on the Mozambique-Zimbabwe border. We are working with our Zimbabwe partners and closely monitoring progress in demining the border. (Next slide)

Our plan for 2013 is to:

- Conclude Survey and Demining interventions in the province of Maputo, Manica, Inhambane, Sofala and Tete.
- Reinforce the operational demining capacity with additional teams and mechanical assets in Maputo and Sofala where demining operations are delayed.
- Reinforce the operational demining capacity with additional teams and mechanical assets in Manica and Tete where the Border minefields present a challenge.
- Classify as "mine-free" 25 districts in the provinces of Tete, Sofala, Manica, Inhambane and Maputo.
- Mobilize the necessary resources to ensure the completion by the 2014 deadline.

Madam Chair,

We believe we have now established a demining capacity consisting of humanitarian and commercial demining operators capable of clearing and releasing approximately 9 million square meters of mine suspected area per year.

Madam Chair,

To summarize, The Government of Mozambique remains committed to implementing our National Mine Action Plan in order to clear all known mine suspected areas ahead of our 1st of March 2014 deadline. So far during our extension period, we have completed the necessary surveys to better define the remaining mine suspected areas and do not expect any further large areas of mine suspected areas to be discovered. Despite the challenge presented by the new suspected

areas, we believe that Mozambique remains on target to meet its 2014 deadline. We believe we have built the sufficient capacity to complete the work ahead. Our greatest remaining challenge remains the border minefields along the Mozambique-Zimbabwe Border. We are closely monitoring the demining progress on the border and will provide regular updates to our international partners on progress and challenges as they arise. In this regards, we hope that we can continue to receive the necessary support from our international partners to ensure that we achieve our goal of a 'mine-free' Mozambique.

MUITO OBRIGADO!

Geneva, 5 December 2012

***MOZAMBIQUE UPDATE ON
IMPLEMENTING ARTICLE 5***
12th Meeting of States Parties to the
Anti-Personnel Mine Ban Convention

Geneva, 5 December 2012



Results of Activities 2008 -2012

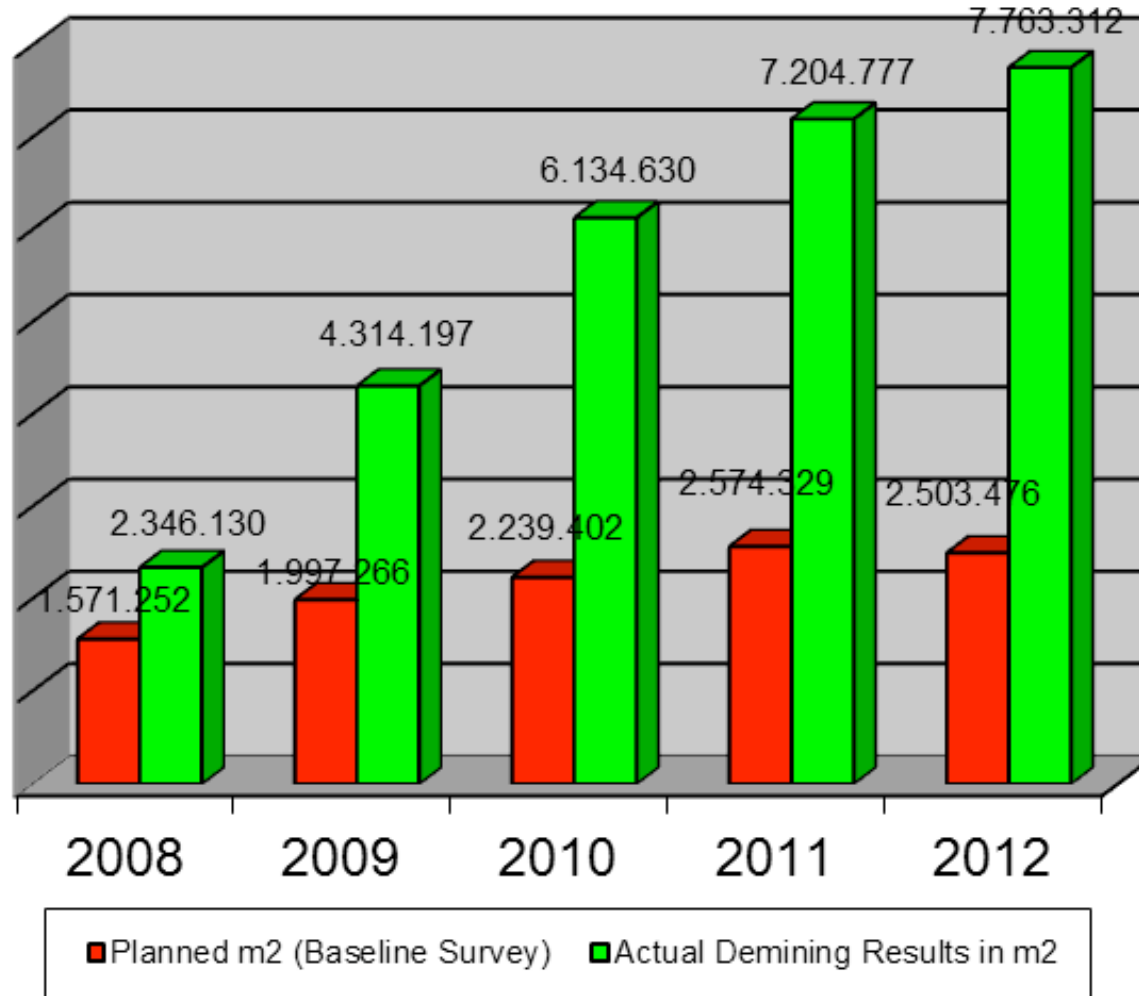
- The 2007-2008 Baseline reported the existence of 541 suspected hazard areas corresponding to 12.2 million m², in the provinces of Tete, Manica, Sofala, Inhambane, Gaza and Maputo.
- From 2008 to 2011, additional surveys identified a total of 512 new suspected hazard areas corresponding to cerca 22.2 million m² were identified that were not captured in the Baseline Survey.
- Between 2008 and Nov.2012, a total of 900 suspected hazard areas were demined corresponding to 27,763,046 million m² resulting in the destruction of 20,500 landmines and 6,300 UXOs.
- Of the original 541 Baseline tasks outlined in Mozambique's Article 5 extension request, 436 of the tasks are now completed corresponding to 10.5 million m² or 86% of the original suspected area.
- The total number includes, 431 hazard areas not captured in the Baseline survey that were already demined corresponding to 15.6 million m².

Demining Results 2008 -2012 (cont .)

YEAR	DEMINING				QA	MRE	
	N° areas	Area (m2)	Destruction		N° Visits	MRE Sessions	Audience
			Mines	Uxos			
2008	237	2,346,130	1,142	846	69	30	3,069
2009	126	4,314,197	914	871	74	57	1,743
2010	136	6,134,630	883	531	110	99	9,862
2011	229	7,204,777	8,487	406	258	92	12,694
2012*	139	7,763,312	8624	3646	73	34	9,641
TOTAL * as of 15/11/2012	900	27,763,046	20,050	6,300	584	312	37,009



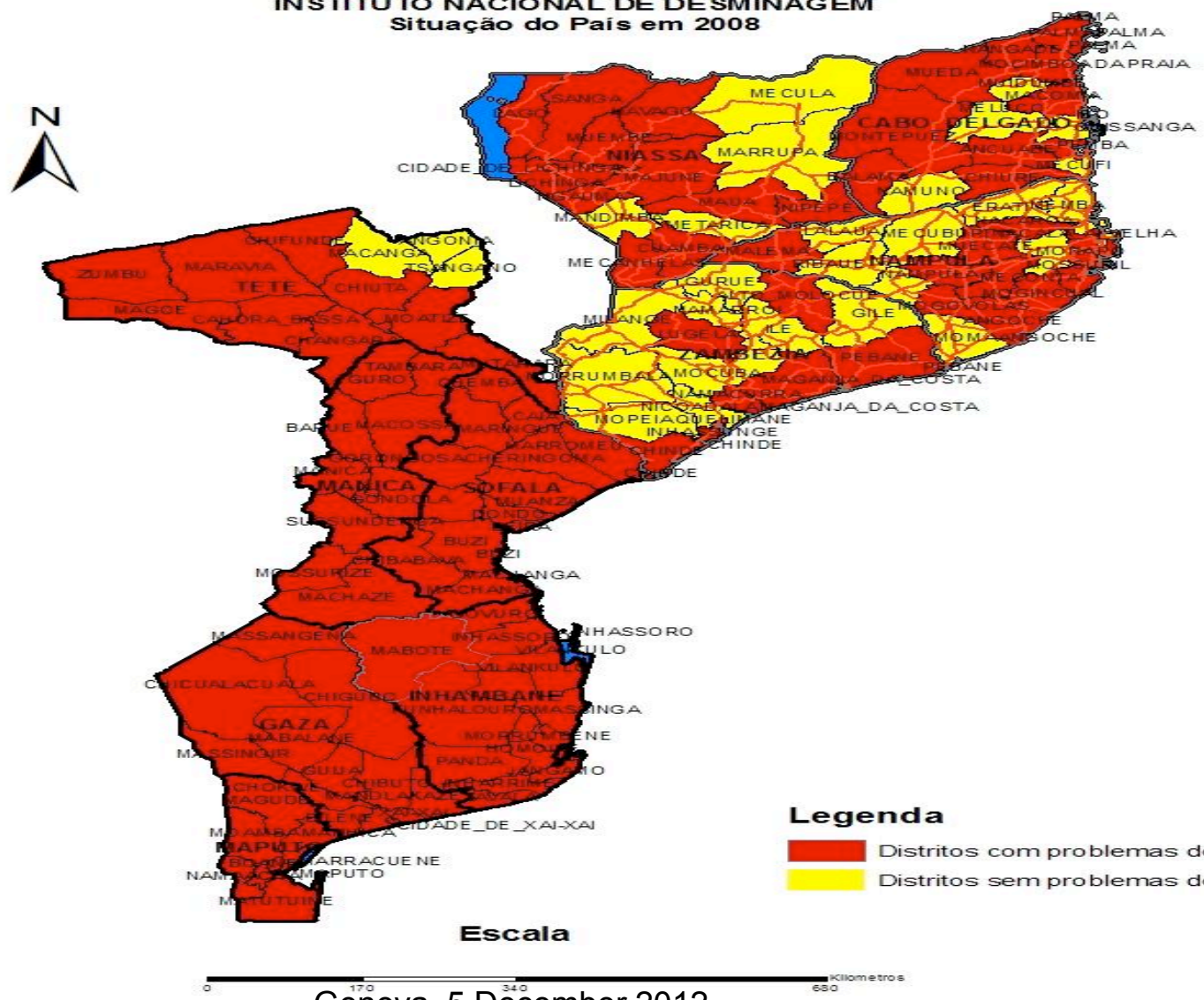
Demining Results 2008-2012 (cont.)



Geneva, 5 December 2012

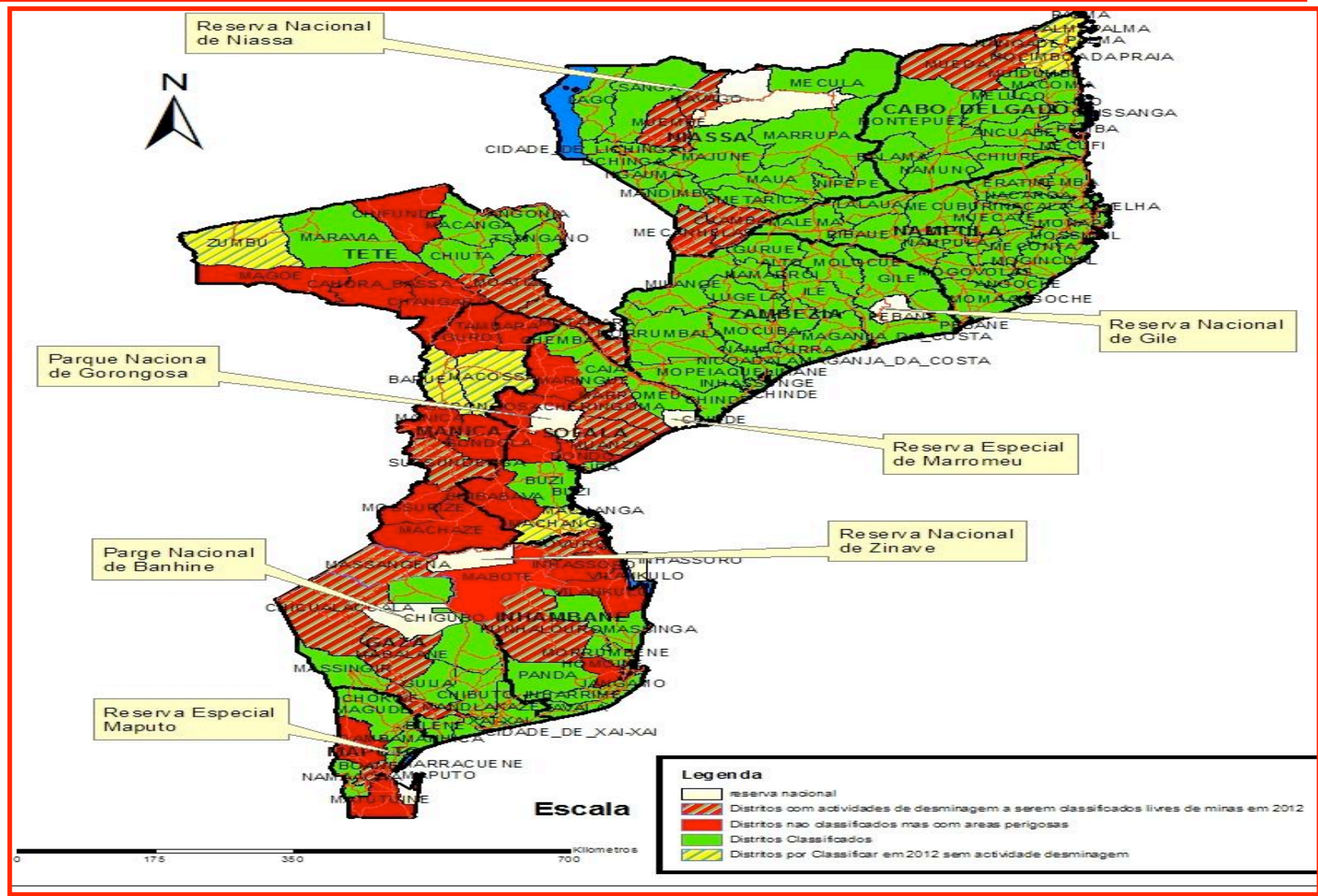
MINE AFFECTED DISTRICTS IN 2008

REPÚBLICA DE MOÇAMBIQUE
 INSTITUTO NACIONAL DE DESMINAGEM
 Situação do País em 2008



Geneva, 5 December 2012

Remaining Mine Problem in December 2011



Remaining Mine Problem in November 2012

REPÚBLICA DE MOÇAMBIQUE
INSTITUTO NACIONAL DE DESMINAGEM
Situação actual de minas em Moçambique (Novembro, 2012)



- Legenda**
- Estradas
 - Distritos Classificados como livres de minas
 - Distritos com operações em fase conclusiva
 - Distritos a serem desminados em 2013

Escala



Mine Free Districts as of November 2012

Province	Nº Districts	Location
Cabo Delgado	15	Ancuabe, Montepuez, Macomia ,Mecufe, Namuno, Quissanga, Meluco, Muidumbe, Balama, Chiúre, Pemba-Metuge, Mocimboa da Praia, Palma, Mueda and Nangade
Niassa	15	Sanga, Mavago, Muembe, Majune, Lichinga, Mandimba, Nipepe, Marrupa, Mecula, Metarica, Ngaúma, Mavago, Muembe, Cuamba and Mecanhelas
Nampula	20	Moma, Angoche, Mogincual, Ilha de Moçambique, Mossuril, Nacala Porto, Nacala-a-Velha, Memba, Nacaroa, Malema, Meconta, Erati, Monapo, Mogovolas, Murrupula, Ribáuè, Lalaua, Mecuburi, Muecate and Rapali
Zambézia	16	Namacurra, Mocuba, Alto Molócué, Gurué, Lugela, Morrumbala, Chinde, Pebane, Milange, Gilé, Ile, Maganja da Costa, Namarrói, Mopeia, Nicoadala and Inhassunge
Tete	7	Angónia, Tsangano, Macanga, Chiuta , Marávia, Zumbo and Chifunde
Manica	4	Báruè, Macossa, Guro and Machaze
Sofala	5	Marromeu, Caia, Buzi, Chemba and Machanga
Inhambane	8	Panda, Zavala, Massinga, Morrumbene, Maxixe, Jangamo, Inharrime and Vilanculos
Gaza	10	Mandlakazi, Chigubo, Bilene, Chibuto, Massingir , Guijá, Chicualacuala, Chókwè, Massangena and Mabalane
Maputo	5	Manhiça, Magude, Marracuene, Namaacha and Matola
Total	105	

Remaining Situation as of November 2012

Provinces	Districts	Sites	Area (m2)
Tete	5 (Changara, C. Bassa, Mágoè, Moatize and Mutarara)	15	1,522,549
Manica	5 (Mossurize, Sussundenga, Gondola, Manica and Tambara)	28	2,334,736
Sofala	7 (Chibabava, Cheringoma, Dondo, Gorongosa, Marínguè, Muanza and Nhamatanda)	135	5,214,876
Inhambane	5 (Funhalouro, Mabote, Homoine, Inhassoro and Govuro)	58	1,363,732
Maputo	3 (Matutuine, Boane and Moamba)	12	882,283
TOTAL as of 15/11/2012	25 Districts	248	11,318,176
	Area remaining excluding 9 border tasks, totalling 2,222,100 m2	239	9,096,076



Estimated Remaining Area in January 2013

Province	Districts	Sites	Area (m2)
Tete	4 (Changara, C. Bassa, Mágoè and Moatize)	11	1,490,843
Manica	5 (Mossurize, Sussundenga, Gondola, Manica and Tambara)	27	2,329,951
Sofala	3 (Chibabava, Cheringoma and Maríngué)	96	3,638,245
Inhambane	4 (Funhalouro, Mabote, Inhassoro and Govuro)	35	985,992
Maputo	1 (Moamba)	2	421,690
TOTAL	17 Districts	171	8,866,721
	Remaining hazard area excluding 9 border minefield tasks totalling 2,222,100 sqm	162	6,644,621



Perspectives for 2013

- Conclude Survey and Demining interventions in the province of Maputo, Manica, Inhambane, Sofala and Tete.
- Reinforce the operational demining capacity with additional teams and mechanical assets in Maputo and Sofala where demining operations are delayed.
- Reinforce the operational demining capacity with additional teams and mechanical assets in Manica and Tete where the Border minefields present a challenge.
- Classify as “mine-free” 25 districts in the provinces of Tete, Sofala, Manica, Inhambane and Maputo.
- Mobilize the necessary resources to ensure the completion by the 2014 deadline.

Demining Plan 2013/estimated costs

Province	Districts	No. of Tasks	Area in m ²	Est cost in USD
Maputo	1 (Moamba)	2	421.690	\$1.265.070
Manica	5 (Mossurize, Manica, Sussundenga, Tambara, Gondola)	27	2.329.951	\$4.324.899
Inhambane	4 (Funhalouro, Govuro, Inhassoro and Mabote)	35	985.992	\$1.478.988
Sofala	3 (Cheringoma, Maringuè, Chibabava)	96	3.638.245	\$6.025.728
Tete	4 (Cahora Bassa, Changara, Magoé, Moatize)	11	1.490.843	\$4.460.794
Total	17 Districts	171	8.866.721	\$17.555.479



Geneva, 5 December 2012