

Tajikistan Request for Extension for consideration at the Second Review Conference

Meetings of Intersessional Committees of the Ottawa Convention

(24 – 29 May 2009 , Geneva)

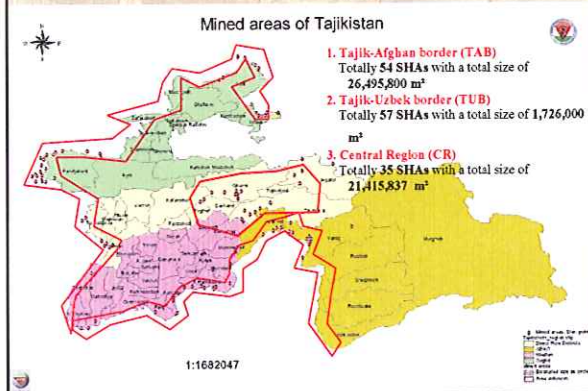
Jonmahmad Rajabov , TMAC Manager

1

What remains to be done in order for your State to complete implementation of Article 5?

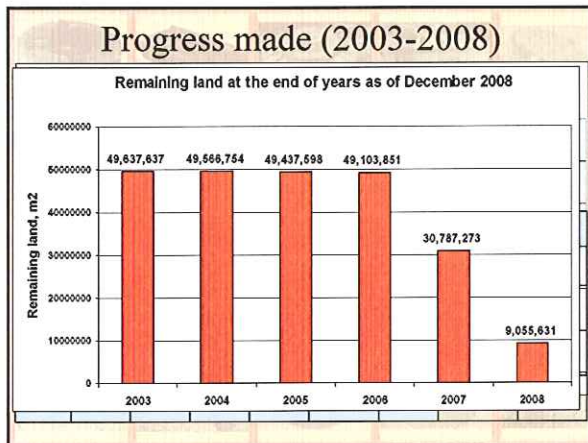
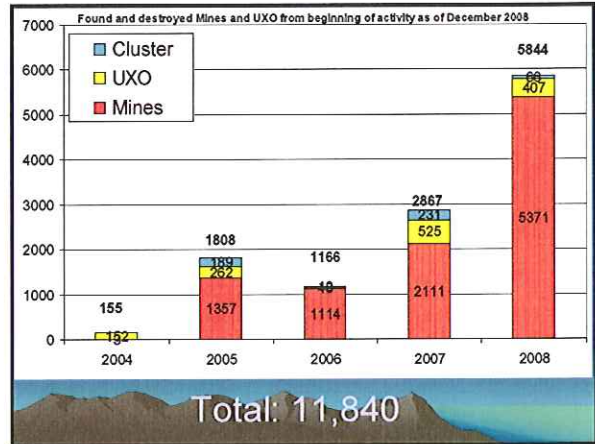
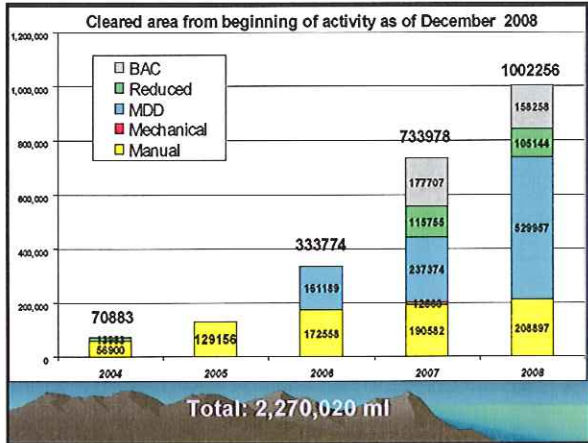
How much mined area and how many mined areas remain?

During the initial survey (2004-2005) totally 159 Suspected Hazards Areas (SHA) have been identified covering a total size of 49,637,637 m² through Tajikistan.



Survey and manual clearance activity (as December 2008)

- Contamination suspected areas: 50,668,272 m²
(5,794,000 m² along Tajik Afghan border is not surveyed yet)
- Cleared: - 2,270,020 m²
- Reduced SHAs: - 42,268,367 m² during re-survey
- Added new areas: + 2,925,746 m² during re-survey
- Land Release: 44,538,387 m²
- Remaining Land: 9,055,631 m² + 5,794,000 m² un-surveyed
= 14,849,631 m² (360 SHAs & Mine Fields)
- Found & Destroyed: more than 9956 mines, 1884 (UXOs/CM) and 4659 cartridges



As of December 2008, taking into account the results of land release activities, the identification of new areas, separation of bigger areas, and minefield records, there are currently 208 areas to address with an approximate total size of 9,055,631 m² and an additional 360 un-surveyed minefields with an approximate total size of 5,794,000 m² and an estimated 228,586 AP mines and 207,6 kg of explosives.

In Tajikistan Totally 568 areas with an approximate total size of 14,849,631 m² remain for clearance and survey

Tajik-Afghan border (TAB)
115 confirmed mined areas with an approximate total size of 5,601,370 square meters left to clear in the TAB and additional 360 un-surveyed minefields with an approximate total size of 5,794,000 m², which contain an estimated 228,586 AP mines and 207,6 kg of explosives.

Tajik-Uzbek border (TUB)
As of December 2008, 57 areas are left to resurvey.

Central Region (CR)
As of December 2008, 36 SHAs with an approximate total size of 3,454,261 square meters remain, with 19 being confirmed as mined areas and 17 of the 36 still needed to be re-surveyed.

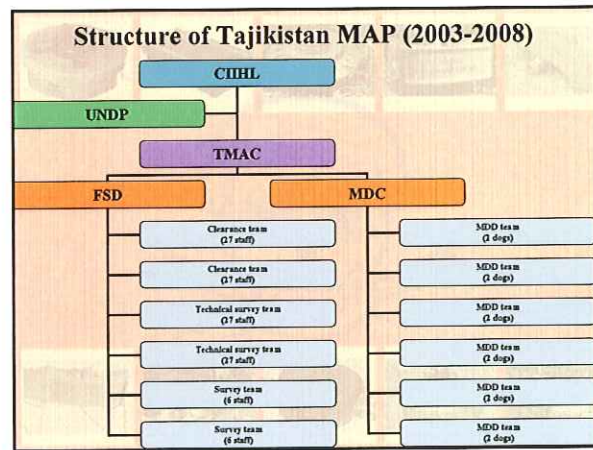
2

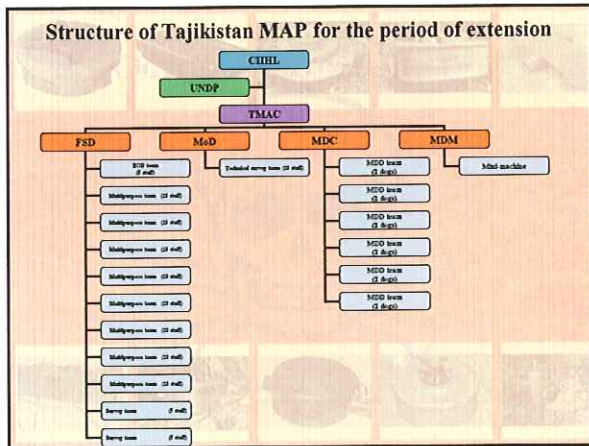
What are the circumstances that impede the ability of your State to destroy or ensure the destruction of all anti-personnel mines in mined areas under your State's jurisdiction or control within the requested extension period?



3

What major structural, technical or practical changes, if any, has your state planned for the period of the extension to ensure that your State will meet its article 5 obligations in the requested time frame?





4

What is the amount of time requested and what is the rationale for this request?

The amount of time requested to fulfil our obligation is 9 years and 9 month (April 2010- December 2019).

Following has been taken into account to rationalize this request:

- Existing manual clearance and MDD capacity
- One machine for mechanical demining
- ≈ 20% of total contaminated size will be reduced (based on analyzes of survey reports, minefield records, characteristics of mined areas)

After reduction:

- ≈ 30% will be clear by the Mechanical Demining Machine (MDM)
- ≈ 20% will be clear by the Mine Detection Dogs (MDD)
- ≈ 50% will be clear by manual clearance Teams
- Average yearly clearance by Manual clearance, MDD and MDM Teams

Re-survey operations:
 Approximately 2,000,000 m² in the TAB and 1,000,000 m² in the Central Region will be reduced

•Manual Clearance:
 Manual clearance will be implemented by 82 deminers working 8 hrs / 200 days annually
 Average daily clearance using full excavation method: 2-4 m²/day (≈ 20 deminers)
 Average yearly clearance by 20 deminers using full excavation method ≈ 8,000-16,000
 Average daily clearance using mine detector: 20-30 m²/day (≈ 62 deminers)
 Average yearly clearance by 62 deminers using mine detectors ≈ 248,000-372,000
 Average yearly clearance by 82 deminers: ≈ 256,000-388,000 m²/year

Mine Detection Dogs (MDD):
 Clearance will be implemented by 10 MDDs (2 other MDDs will be on reserve)
 • 10 MDDs working 8 hours / 200 days annually
 • Average daily production by one dog is ≈ 150-200 m² / day
 • Average yearly production by one dog is ≈ 30,000-40,000 m² / year
 • Average yearly clearance by 10 MDDs ≈ 300,000 - 400,000 m²/year

Mechanical Demining Machine (MDM):
 • Daily working hours for one mini-machine: 8 hours / 200 days annually
 • Average daily clearance by one mini-machine ≈ 5,000 - 7,000 m²/day
 • Average yearly clearance by one mini-machine ≈ 1,000,000 - 1,400,000 m²/year

Years	Region	Land release				REMAINING LAND by the end of the year, m ²		
		Manual clearance, m ²	Mine detecting dogs, m ²	One Machine for mechanical demining, m ²	Area reduction by the Re-Survey operations, m ²	TOTAL, m ²	TAB	CR
2008						11,849,631	3,454,261	
2009	TAB	200,000	400,000	800,000	2,000,000	3,400,000	7,995,370	
	CR	100,000		400,000	1,000,000	1,500,000		1,954,261
2010	TAB	200,000	400,000	800,000		1,400,000	6,595,370	
	CR	100,000		200,000		300,000		1,654,261
2011	TAB	200,000	400,000	700,000		1,300,000	5,295,370	
	CR	100,000		500,000		600,000		1,854,261
2012	TAB	200,000	400,000			600,000	4,695,370	
	CR	100,000		200,000		300,000		754,261
2013	TAB	300,000	400,000			700,000	3,995,370	
	CR	100,000				100,000		654,261
2014	TAB	500,000	100,000			600,000	3,395,370	
	CR	200,000				200,000		454,261
2015	TAB	500,000	100,000			600,000	2,795,370	
	CR	200,000				200,000		254,261
2016	TAB	555,000	100,000			655,000	2,190,370	
	CR	255,000				255,000		0
2017	TAB	750,000				750,000	1,440,370	
2018	TAB	750,000				750,000	690,370	
2019	TAB	700,000				700,000	0	
TOTAL		5,960,000	2,300,000	3,600,000	3,000,000	14,860,000		

Assumptions

From 14,849,631 m² approximately 20% will be reduced.
 After reducing from 11,849,631 m² will be cleared:

- Approximately 30% by machine
- Approximately 20% by dogs
- Approximately 50% manually

Yearly:

- Manual clearance – 256-388,000 m²
- Mine detection dogs – 300-400,000 m²
- Mechanical - 1,000,000 - 1,400,000 m²
- Area reduction by survey – 3,000,000 m²

Totally in 10 years:

- Area reduction – proximately 3,000,000 m² by the end of 2009
- Manual clearance - proximately 5,960,000 m² till 2019
- Mine detection dogs - proximately 2,300,000 m² till 2015
- Mechanical - proximately 3,600,000 m² till 2012

Leftover size:
 9,055,631 m² + 5,794,000 m² = 14,849,631 m²

Total cleared size in 10 years – 14,860,000 m²

5

What is your State's plan to destroy or ensure the destruction of all anti-personnel mines in mined areas under your State's jurisdiction or control?

Extension Statement of Work

- Complete the re-survey operations in the 6 leftover districts in the TAB and 5 leftover districts in Central Region by December 2009;
- Clear the 5,601,370 m² 115 SHAs in the TAB by December 2019;
- Clear 5,794,000 m² of 360 unsurveyed minefields in the TAB by December 2019;
- Clear the 3,454,261 m² of 36 SHAs in the Central Region by December 2016;
- Totally clear 14,849,631 m² of 511 SHAs in the TAB and CR;
- Remove all warning signs from the cleared areas;
- Hand over all cleared areas to the Local Authorities by December 2019;
- Submit final Article 5 report to the United Nations by 1 April 2020.

Table 6 - Region					
Year	Land release by	Number of areas to be cleared	Size to be cleared or reduced, m ²	Approximate number of areas by the end of the year	Approximate size by the end of the year, m ²
2008	MDM	4	400,000	36	3,454,261
	Survey	1	200,000		
	Manual	1	1,000,000		
2009	MDM	5	400,000	20	1,954,261
	Survey	1	200,000		
	Manual	1	1,000,000		
2010	MDM	8	200,000	16	1,654,261
	Survey	1	200,000		
	Manual	1	1,000,000		
2011	MDM	4	500,000	10	1,054,261
	Survey	1	100,000		
	Manual	1	1,000,000		
2012	MDM	5	200,000	24	3,054,261
	Survey	1	200,000		
	Manual	1	1,000,000		
2013	MDM	5	200,000	8	754,261
	Survey	1	200,000		
	Manual	1	1,000,000		
2014	MDM	5	200,000	22	3,254,261
	Survey	1	200,000		
	Manual	1	1,000,000		
2015	MDM	5	200,000	4	454,261
	Survey	1	200,000		
	Manual	1	1,000,000		
2016	MDM	8	250,000	10	1,404,261
	Survey	1	200,000		
	Manual	1	1,000,000		
2017	MDM	8	250,000	10	1,404,261
	Survey	1	200,000		
	Manual	1	1,000,000		
2018	MDM	8	250,000	10	1,404,261
	Survey	1	200,000		
	Manual	1	1,000,000		
2019	MDM	8	250,000	10	1,404,261
	Survey	1	200,000		
	Manual	1	1,000,000		
TOTAL		43	3,454,261	8	8
TOTAL		43	11,654,000		

6

What new methodologies, if any, are being explored or have been employed in your state's effort to fulfill its Article 5 obligations during the requested extension period?

Land release methods and standards

Following demining, survey and other land release methods will be used for the period of extension :

1. Area reduction by survey teams
2. Manual clearance
 - using Full Excavation Prod System (FEPS)
 - using mine detectors
3. Technical survey
 - using mine detectors
 - using mine detection dogs (MDD)
 - using machine

In the TAB all of the above mentioned methods will be used. In the Central Region all mentioned methods will be used except for mine detection dogs, due to the high vegetation.



7

What financial and technical means has your State dedicated to ensuring the fulfillment of your State's Article 5 obligations and what financial and technical means will your State dedicate for this purpose?

Finance resources delivered to support demining progress

	2001	2002	2003	2004	2005	2006	2007	2008
Financial Resources made available by the Tajikistan			400,000	500,000	500,000	550,000	574,000	616,000
Financial Resources made available by actors other than the Tajikistan	20,000	23,000	439,704	1,997,182	1,220,112	2,547,782	1,378,221	2,134,794
TOTAL	20,000	23,000	839,704	2,497,182	1,720,112	3,097,782	1,952,221	2,760,794

8

What, if any, are your priorities for external assistance to support your State's fulfillment of its Article 5 obligations up to and during the extension period requested by your State?

Expected sources of funding

Years	Financial Resources made available by actors other than the Tajikistan	Financial Resources (only Technical support) made available by the Tajikistan	TOTAL
2009	3,720,000	650,000	4,270,000
2010	3,350,000	650,000	3,900,000
2011	3,500,000	700,000	4,050,000
2012	3,600,000	700,000	4,150,000
2013	3,200,000	750,000	3,750,000
2014	3,200,000	750,000	3,750,000
2015	3,200,000	800,000	3,750,000
2016	3,200,000	800,000	3,750,000
2017	3,100,000	800,000	3,650,000
2018	3,100,000	800,000	3,650,000
2019	3,100,000	800,000	3,650,000
TOTAL	36,270,000	8,200,000	44,470,000