



**Intervention by Saleh Al-Dahyani,  
on behalf of Raising the Voices Participants  
Landmine Survivors Network  
Wednesday, June 23, 2004**

**Meeting of Standing Committee on Victim  
Assistance and Socio-Economic Integration of  
the Mine Ban Treaty**



*Accessibility*

- Article 6.3 of the Mine Ban Treaty calls for the social and economic reintegration of landmine survivors. Social and economic reintegration can only happen if the world we live in is accessible.



## *Accessibility*

Accessibility is important in the daily life of persons with disabilities, whether collecting water, going to school, trying to get to work, trying to get a job, or participating in international events such as the Nairobi Summit.



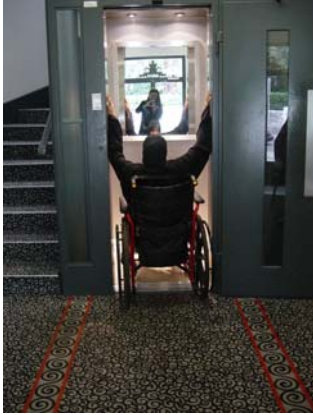
## *Accessibility*

➤ Accessibility to public places for all disability types, including hotels, government buildings, hospitals, schools,





### \* Lifts



### \* Bathrooms

**BAD**

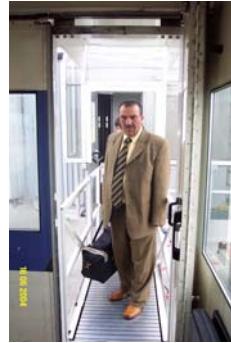


**GOOD**





➤ Ensuring assistance at airports, including assisting with immigration requirements



Exiting the plane

Immigration counter



➤ Adaptation of sidewalks and streets to allow for wheelchair access, vocal signs for the blind and sight impaired

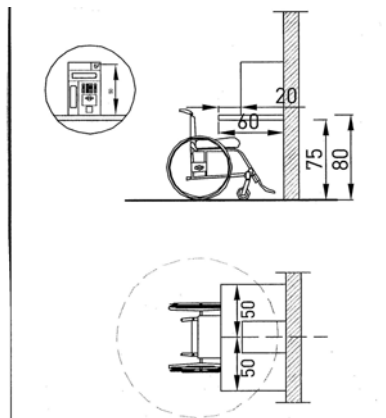




➤ Adapted transportation

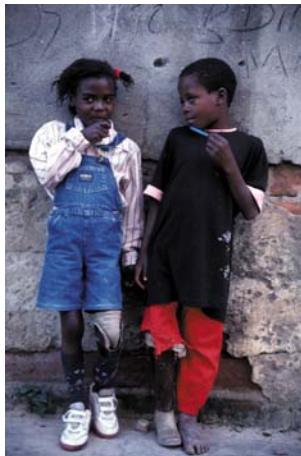


➤ Accessibility to communication and information, such as telephone, computer software, audio cassettes, CDs, Braille and so on...





➤ Service counters, including reception desks, immigration, shops...



Effective measures, including changes to law and public policies have to be undertaken immediately

© Tim Grant



To ensure the safe and proper access of persons with disabilities so we can participate in society.

Thank you !

